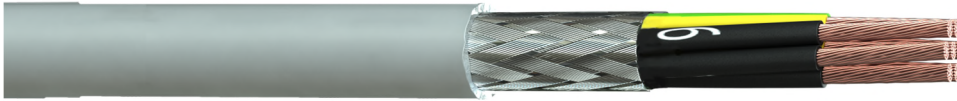


Description: Multicore Signal & Control Cable with Tinned Copper Wire Braid, Polyvinyl Chloride (PVC) Grey Sheath.



Construction

Conductor Material : Bare Copper, Class 5
 Insulation Material : Polyvinyl Chloride (PVC)
 Overall Screen : Tinned Copper Wire Braid (≥ 70% Coverage)
 Sheath Material : Polyvinyl Chloride (PVC)
 Sheath Colour : Grey
 Core Identification : 2 Cores – Black Numbered Cores
 : 3 Cores and above – Black Numbered Cores + Green/Yellow

Electrical Characteristics

Conductor Resistance : BS EN 60228
 Insulation Resistance : 200 MΩ.M
 Working Voltage : 300/500V
 Test Voltage (AC) : 2000V

Physical Characteristics

Bend Radius : Flexing 15 x OD
 : Static 10 x OD
 Temperature Rating : Flexing -5°C to +70°C
 : Static -20°C to +70°C

Standards

Flame Retardant : BS EN 60332-1-2
 RoHS3 Compliant : Yes
 CE Compliant : LVD (2014/35/EU)

Part No.	Cores x mm ²	Weight kg/km	OD mm	Part No.	Cores x mm ²	Weight kg/km	OD mm	Part No.	Cores x mm ²	Weight kg/km	OD mm
32000502	2 x 0.5	42	5.4	32001002	2 x 1.0	84	6.2	32002502	2 x 2.5	148	8.6
32000503	3 x 0.5	51	5.8	32001003	3 x 1.0	110	6.5	32002503	3 x 2.5	188	9.1
32000504	4 x 0.5	61	6.5	32001004	4 x 1.0	130	7.2	32002504	4 x 2.5	236	9.9
32000505	5 x 0.5	80	6.9	32001005	5 x 1.0	156	8.1	32002505	5 x 2.5	270	11.0
32000507	7 x 0.5	98	7.4	32001007	7 x 1.0	192	8.8	32002507	7 x 2.5	340	11.9
32000512	12 x 0.5	156	10.1	32001012	12 x 1.0	265	11.6	32002512	12 x 2.5	585	16.0
32000518	18 x 0.5	215	11.8	32001018	18 x 1.0	380	14.0	32002518	18 x 2.5	725	19.1
32000525	25 x 0.5	314	14.4	32001025	25 x 1.0	475	15.8	32004003	3 x 4.0	250	10.4
32000702	2 x 0.75	56	5.9	32001502	2 x 1.5	97	7.5	32004004	4 x 4.0	302	11.6
32000703	3 x 0.75	70	6.2	32001503	3 x 1.5	125	7.9	32004005	5 x 4.0	370	12.9
32000704	4 x 0.75	95	6.7	32001504	4 x 1.5	165	8.8	32006003	3 x 6.0	285	13.1
32000705	5 x 0.75	130	7.5	32001505	5 x 1.5	193	9.1	32006004	4 x 6.0	412	14.2
32000707	7 x 0.75	168	8.0	32001507	7 x 1.5	245	10.4	32006005	5 x 6.0	505	15.5
32000712	12 x 0.75	232	11.0	32001512	12 x 1.5	365	13.9	32010004	4 x 10	620	17.5
32000718	18 x 0.75	315	12.7	32001518	18 x 1.5	553	15.6	32010005	5 x 10	796	19.7
32000725	25 x 0.75	418	14.8	32001525	25 x 1.5	720	20.8	32016004	4 x 16	1090	20.5
								32016005	5 x 16	2070	22.4